

# creativity glows

Creativity Shell 



*moda*  
FABRICS + SUPPLIES®

Find Your Path

PS47530 · Finished Size: 72"x84"

5/2022

### CUTTING

*Note: There are several directional fabrics in this fabric line, meaning they have a 'right way up'. The cutting below will yield prints as shown in the quilt image on front page.*

**PRINTS:** From each of (14)  $\frac{3}{4}$  yard fabrics, cut (4)  $6\frac{1}{2}$ " x Width of Fabric (WOF) strips.

From (2)  $6\frac{1}{2}$ " x WOF strips, cut (6)  $6\frac{1}{2}$ " x  $12\frac{1}{2}$ " rectangles.

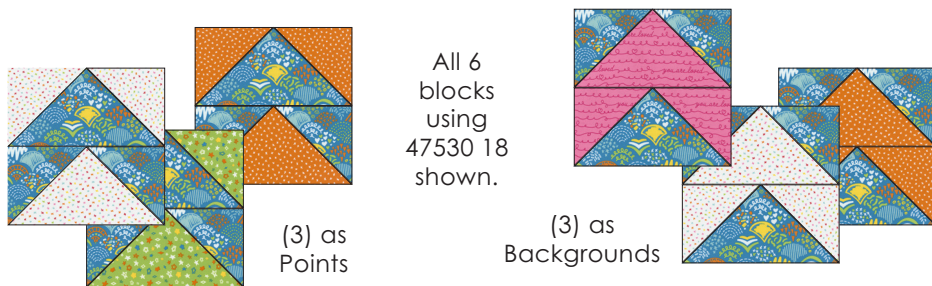
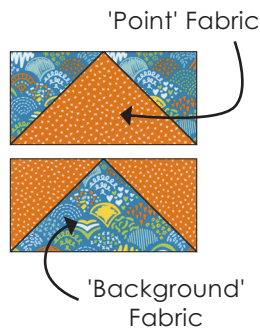
From other (2)  $6\frac{1}{2}$ " x WOF strips, cut (12)  $6\frac{1}{2}$ " x  $6\frac{1}{2}$ " squares.

**BINDING:** From the binding fabric, cut (8)  $2\frac{1}{2}$ " x WOF strips.

### FABRIC PAIRING

Each block consists of (2) flying geese units in opposite colors, which join together to form a 'point.' Before you sew, pair up your fabrics for each block to make sure you're happy with the combinations and distribution of prints and colors.

Each of the (14) fabrics should appear in (6) total blocks—(3) where it makes the point, and (3) where it is the background.



All 6 blocks using 47530 18 shown.

### FABRIC PAIRING (cont'd)

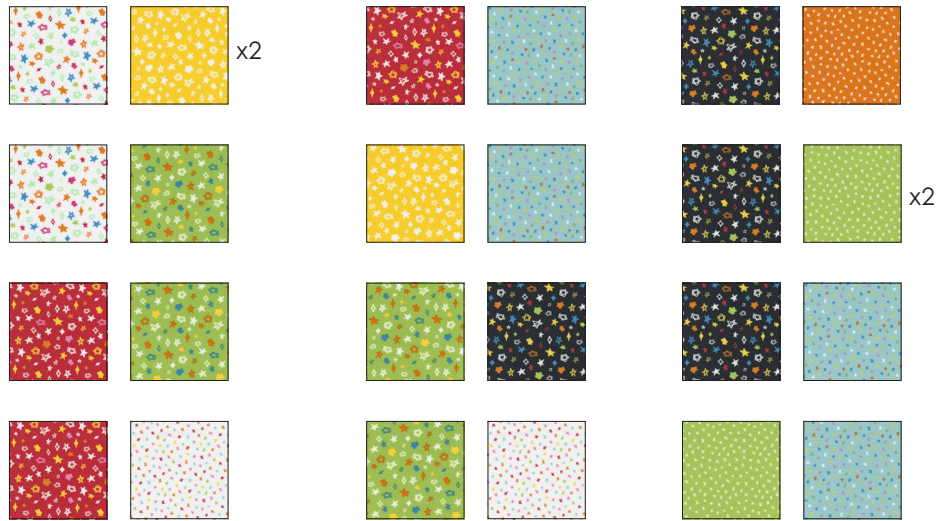
To make the quilt as shown on cover, pair up fabrics as shown below. Each block requires (1)  $6\frac{1}{2}$ " x  $12\frac{1}{2}$ " rectangle and (2)  $6\frac{1}{2}$ " x  $6\frac{1}{2}$ " squares each of two different fabrics in the pair (shown for first pair below).

The diagram shows a grid of fabric pairings. On the left, a large rectangle is shown with arrows pointing to a pair of fabric squares. The grid consists of 14 pairs of fabric squares, each pair representing a different fabric from the 14 fabrics listed in the cutting instructions. Each pair includes a  $6\frac{1}{2}$ " x  $12\frac{1}{2}$ " rectangle and a  $6\frac{1}{2}$ " x  $6\frac{1}{2}$ " square. Some pairs are marked with 'x2' to indicate they are used twice.

Continued on next page

## FABRIC PAIRING (cont'd)

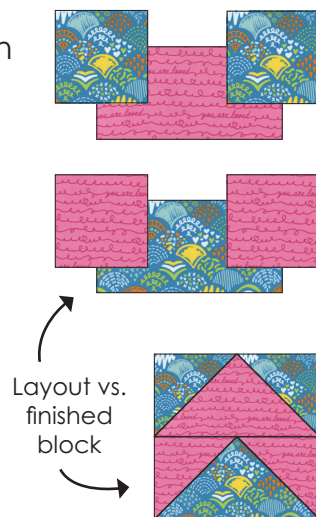
Continued from previous page



## MAKE FLYING GEESE UNITS

*Unless otherwise noted, press seams open.*

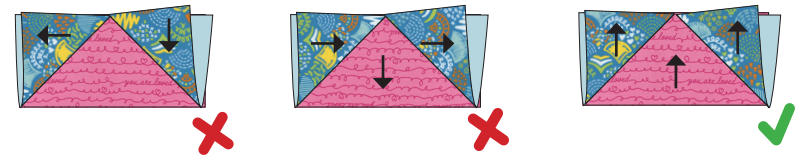
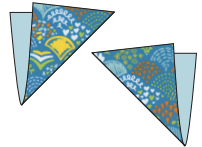
1. To avoid confusion with directional prints, it is recommended to lay out each block as shown when you're getting ready to mark, pin and sew. That way you can double check your prints all face the same direction, and that you have the correct point and background placement.



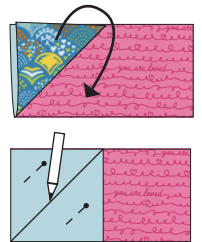
*NOTE: All directional prints should face right way up when the block is pointing up like shown here.*

## MAKE FLYING GEESE UNITS (cont'd)

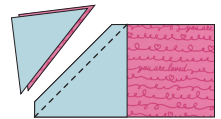
2. Fold the squares on the diagonal Wrong Sides Together (WST) and lay on top of the rectangle so that it looks the way you want the block to come out after sewing. Lightly finger-press the fold to mark the line. Repeat for all four squares in the block.



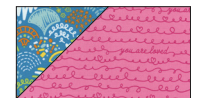
3. Set aside the right square for now. Let your pressed square fall back open, so that the side you want in the final block is wrong side up over the center of the rectangle. Mark the diagonal line with a pencil or other marking tool. Pin on either side to secure.



4. Stitch along your marked line.



5. Trim off your 1/4" seam allowance, making sure you cut on the OUTSIDE of your sewn seam.



6. Press seam open.

7. Repeat for the right side square. The two seams will overlap with approximately 1/4" between the point and the top of the unit.

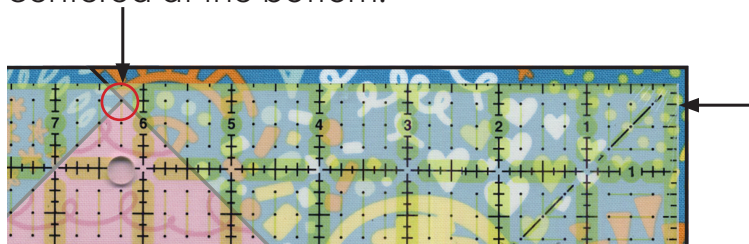


8. Repeat for all (84) Flying Geese Units.

## MAKE FLYING GEESE UNITS (cont'd)

9. To square up the flying geese units, line up your ruler so the 'point' is  $\frac{1}{4}$ " down and  $6\frac{1}{4}$ " in from the right, and making sure the unit is centered at the bottom.

Center 'Point' of Flying Geese Unit at  $\frac{1}{4}$ " down and  $6\frac{1}{4}$ " in from side.

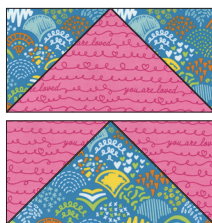


10. Trim the right and top, and then flip the block around 180 degrees. Simply line up the unit to finish trimming to a  $6\frac{1}{2}$ " x  $12\frac{1}{2}$ " size.

11. Repeat to trim all (84) flying geese units to  $6\frac{1}{2}$ " x  $12\frac{1}{2}$ ".

## MAKE BLOCKS

To make a block, sew two opposite flying geese units together with a scant  $\frac{1}{4}$ " seam allowance, making sure you have the correct prints for your point and background.



Assembled blocks measure  $12\frac{1}{2}$ " x  $12\frac{1}{2}$ "

## ASSEMBLE

Following the diagram on the next page, lay out your blocks as shown. Before you start sewing together, check that you like the direction of all the points, and are happy with how the fabrics lay out next to each other, and re-arrange if needed.

Sew blocks together into rows, and press seams open.

Sew rows together to finish the quilt top. Finished quilt top measures 72"x84".

## QUILT TOP ASSEMBLY DIAGRAM



## BINDING

After you've basted and quilted your project, check out Moda's Inspiration + Resources blog for a post with detailed binding instructions. This is the perfect reference not just for this project, but also to save for finishing on all your future quilts!

<https://modafabrics.com/inspiration-resources/binding-basics>

#FindYourPathQuilt  
#CreativityGlowsFabric

*creativity glows*

Creativity Shell 

Find Your Path

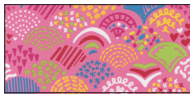
Finished Size: 72"x84"



### FABRIC REQUIREMENTS



47530 18  
¾ yard



47530 20  
¾ yard



47531 20  
¾ yard



47531 21  
¾ yard



47531 23  
¾ yard



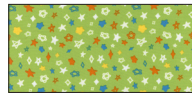
47532 11  
¾ yard



47532 12  
¾ yard



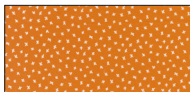
47532 14  
¾ yard



47532 15  
¾ yard



47534 11  
¾ yard



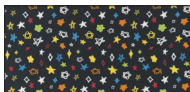
47534 13  
¾ yard



47534 15  
¾ yard



47534 17  
¾ yard



47532 21  
Blocks: ¾ yard  
Binding: ¾ yard

Backing:  
5½ yards



modafabrics.com

 @modafabrics

Stock #: PS47530



7 52106 66744 0